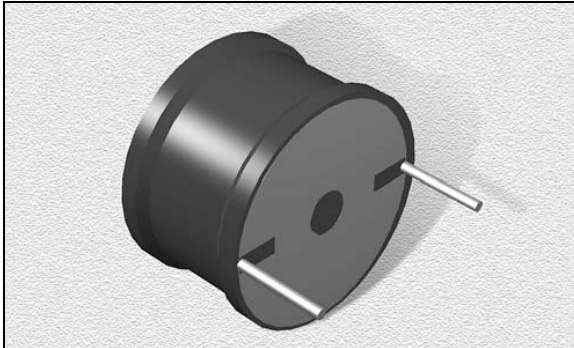


# Drum Cores – Radial Leaded

ginvanix.com

## GVDR3 Series

From 1.5  $\mu\text{H}$  to 4,700  $\mu\text{H}$



### CHARACTERISTICS

**Description:** Radial leaded drum core inductor

**Applications:** Used in switching regulators, power amplifiers, power supplies, SCR and Triac controls, speaker crossover networks, RFI suppression and filters

**Operating Temperature:** -55°C to +130°C

**Inductance Tolerance:**  $\pm 10\%$ ,  $\pm 20\%$

**Testing:** Inductance is tested on an HP4284A at 1.0 kHz

**Packaging:** Bulk pack

**Leads:** Tinned for PC mounting to within 1/16" of the parts body

**Sleaving:** Coils finished with UL-VW-1 sleeving

**Mounting:** Center hole furnished for mechanical mounting

**Rated DC Current:** Measured at 20°C

**Saturation Current:** Lowers inductance by 5%

**Miscellaneous:** Non-standard tolerances and other values available

**Additional Information:** Additional electrical & physical information available upon request

**Samples available. See website for ordering information.**

### SPECIFICATIONS

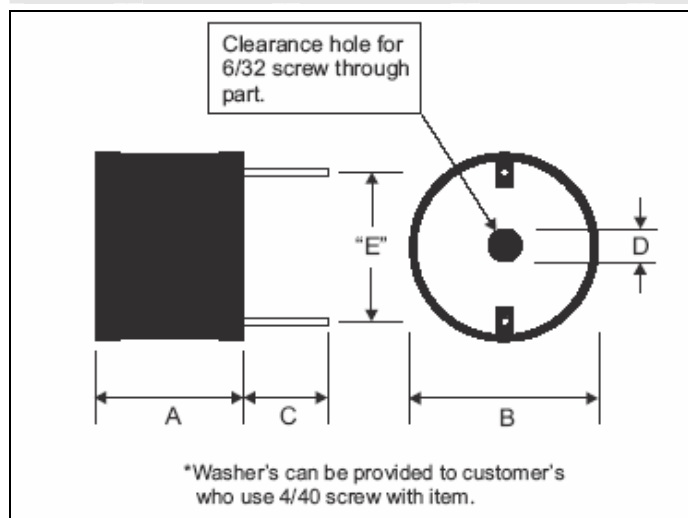
Part numbers indicate tolerance available.

K =  $\pm 10\%$ , M =  $\pm 20\%$

Part Number	InduGVance ( $\mu\text{H}$ )	L Test Freq. (kHz)	DCR Max. ( $\Omega$ )	Saturation DC (A)	Rated DC (A)	Dimension E Approx. Inches
GVDR3-1R5M	1.5	1.0	.003	116	21	.80
GVDR3-2R2M	2.2	1.0	.003	90	21	.80
GVDR3-3R3M	3.3	1.0	.003	74	21	.80
GVDR3-4R7M	4.7	1.0	.003	54	21	.80
GVDR3-6R8M	6.8	1.0	.004	47	21	.80
GVDR3-8R2M	8.2	1.0	.004	42	21	.80
GVDR3-100K	10	1.0	.006	38	17	.70
GVDR3-120K	12	1.0	.008	35	13	.69
GVDR3-150K	15	1.0	.009	32	13	.69
GVDR3-180K	18	1.0	.01	29	13	.69
GVDR3-220K	22	1.0	.01	25	13	.69
GVDR3-270K	27	1.0	.01	23	13	.79
GVDR3-330K	33	1.0	.03	20	13	.79
GVDR3-390K	39	1.0	.02	19	11	.79
GVDR3-470K	47	1.0	.02	19	9.0	.75
GVDR3-560K	56	1.0	.03	17	9.0	.75
GVDR3-680K	68	1.0	.03	15	9.0	.75
GVDR3-820K	82	1.0	.03	14	9.0	.75
GVDR3-101K	100	1.0	.03	13	9.0	.78
GVDR3-121K	120	1.0	.05	12	7.2	.75
GVDR3-151K	150	1.0	.06	11	5.5	.78
GVDR3-181K	180	1.0	.07	9.7	5.5	.78
GVDR3-221K	220	1.0	.08	8.7	5.5	.78
GVDR3-271K	270	1.0	.11	7.9	4.5	.75
GVDR3-331K	330	1.0	.12	7.1	4.5	.81
GVDR3-391K	390	1.0	.17	6.7	4.0	.75
GVDR3-471K	470	1.0	.19	6.0	4.0	.75
GVDR3-561K	560	1.0	.21	5.5	4.0	.75
GVDR3-681K	680	1.0	.26	5.0	2.8	.72
GVDR3-821K	820	1.0	.29	4.5	2.8	.84
GVDR3-102K	1000	1.0	.43	4.1	2.0	.75
GVDR3-122K	1200	1.0	.46	3.7	2.0	.75
GVDR3-152K	1500	1.0	.52	3.4	2.0	.75
GVDR3-182K	1800	1.0	.71	2.8	1.6	.77
GVDR3-222K	2200	1.0	1.0	2.5	1.3	.77
GVDR3-272K	2700	1.0	1.1	2.3	1.3	.77
GVDR3-332K	3300	1.0	1.3	2.0	1.3	.75
GVDR3-392K	3900	1.0	1.7	1.8	1.0	.75
GVDR3-472K	4700	1.0	1.9	1.7	1.0	.75

### PHYSICAL DIMENSIONS

Size	A	B	C	D
	Max.	Max.	Nom.	Typ.
mm	21.3	28	12.7	5.5
inches	0.84	1.1	0.5	0.22



## Ginvanix Electronics Corp.

180, Minsheng St., 303, Hukou, Hsinchu, Taiwan  
Tel: +886-3-5999899; Fax: +886-3-5901484; info@ginvanix.com